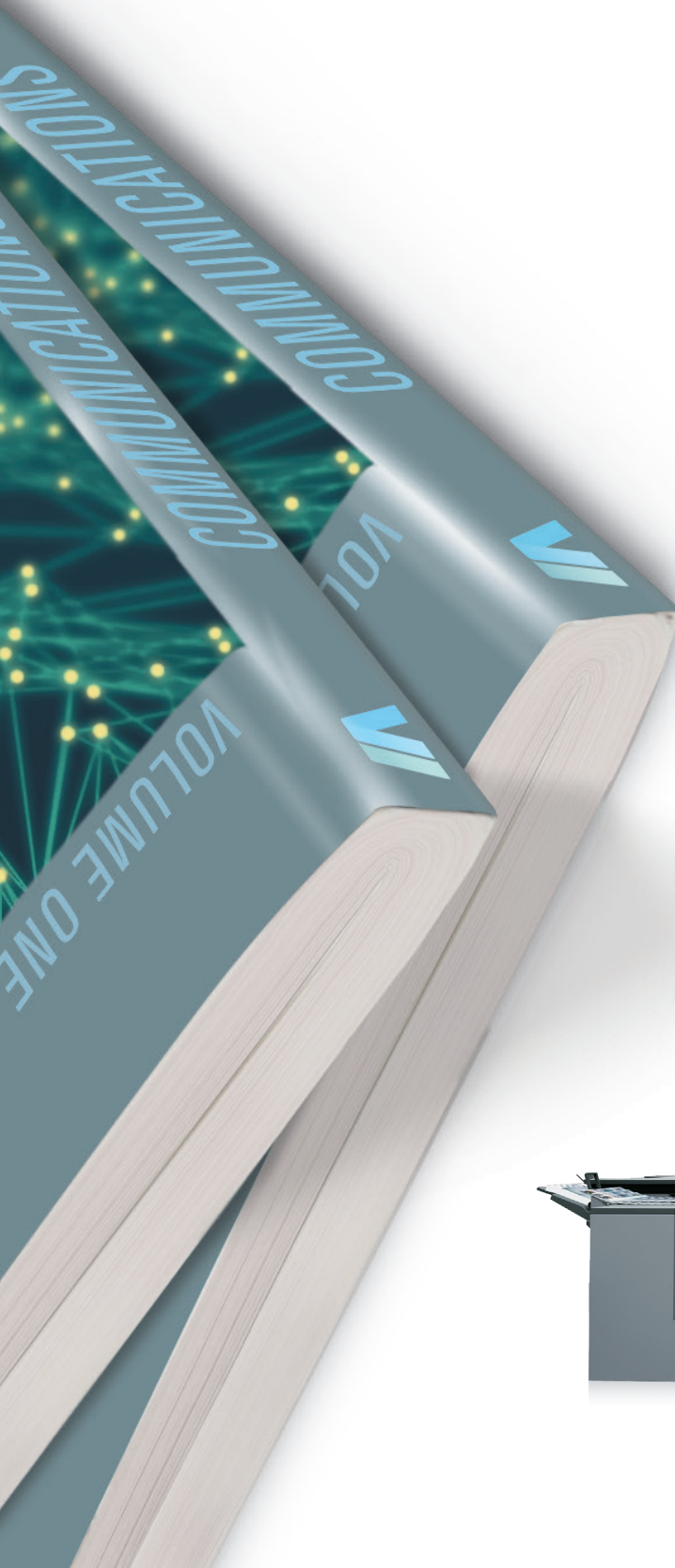




KONICA MINOLTA

Giving Shape to Ideas



- Industry-leading output of 100 ppm in color and B&W for all paper weights
- Long-running reliability, 1,000,000-page monthly duty cycle
- Enhanced Simitri® HD<sup>2</sup> toner for superior halftone and skin-tone reproduction
- Image quality that rivals offset printing at a fraction of the cost
- Optimized 1200 x 1200 dpi resolution with 8-bit processing
- SEAD IV screen processing to continuously maintain image stability over long press runs
- Hybrid decurling function for higher productivity
- Increased paper handling with 13,890-Sheet capacity and weights from 55 to 350 gsm
- Air suction paper handling that ensures virtually jam-free printing
- Saddle-stitched booklet option with three-side trim and square-fold
- 600-Page perfect-bound books with post-fusing cover insertion
- 15" Color lcd touch-panel – can be placed anywhere on unit
- Fiery®, Creo® and Konica Minolta image controller options

## bizhub PRESS C1100

COLOR DIGITAL PRODUCTION PRESS / COPIER / SCANNER



press



# bizhub PRESS C1100

COLOR DIGITAL PRODUCTION PRESS / COPIER / SCANNER

## Descriptions

**bizhub PRESS C1100 Overview** The high-speed bizhub® PRESS C1100 sets a new standard in digital productivity, producing 5,000 or more sides per hour – saving space on your production floor and reducing time and labor costs by incorporating powerful inline finishing options, simple setup and automated color management.

## System Specifications

<b>Resolution</b>	1,200 x 1,200 dpi x 8 bit 1,200 x 3,600 dpi equivalent
<b>Paper weight</b>	55–350 gsm
<b>Duplex unit</b>	Non-stack type; 55–350 gsm
<b>Paper sizes</b>	330 x 487 mm (up to 13" x 19.2")
<b>Maximum image area</b>	321 x 480 mm
<b>Paper input capacity</b>	Max.: 13,890 sheets
<b>Paper output capacity</b>	Max.: 13,600 sheets
<b>Main unit dimensions</b>	35.5" x 37.5" x 52" (W x D x H)
<b>Main unit weight</b>	948 lb

## Productivity

<b>8.5" x 11"</b>	Max. per minute: 100 ppm
<b>11" x 17"</b>	Max. per minute: 52 ppm
<b>13" x 19"</b>	Max. per minute: 46 ppm
<b>8.5" x 11"</b>	Max. per hour: 5,192 pph
<b>11" x 17"</b>	Max. per hour: 2,762 pph
<b>13" x 19"</b>	Max. per hour: 2,581 pph

## Controller

<b>IC-308</b>	External EFI Fiery Controller
<b>IC-310</b>	External EFI Fiery Controller
<b>IC-312</b>	External CREO Controller
<b>IC-602</b>	Internal Konica Minolta Controller

## Scanner Specifications

<b>Scan speed A4</b>	Up to 42 opm
<b>Scan resolution</b>	600 x 600 dpi
<b>Scan modes</b>	TWAIN scan; Scan-to-HDD; Scan-to-FTP; Scan-to-SMB; Scan-to-eMail
<b>Scan formats</b>	TIFF (single and multi page); PDF

## Copier Specifications

<b>Gradations</b>	256
<b>Magnification</b>	25–400%, in 0.1% steps
<b>Multiple copies</b>	1–9,999

## Options

<b>CR-101</b>	Creaser unit for SD-513
<b>FD-503</b>	Folding and punching unit
<b>FD-504</b>	Square folding unit for SD-513
<b>FS-532</b>	100-sheet Stapling unit
<b>GP-501</b>	Multi (GBC) punching unit
<b>GP-502</b>	Auto ring binding unit
<b>HM-101</b>	Humidification unit for RU-511
<b>HT-506</b>	Heating unit for PF-707/8
<b>LS-506</b>	Stacking unit
<b>PB-503</b>	Perfect binding unit
<b>PF-707</b>	Air suction paper feed unit
<b>PF-708</b>	Air suction paper feed unit with ADF
<b>PI-502</b>	Post inserter for FS-532
<b>PK-522</b>	Punch kit for FS-532
<b>RU-510</b>	Reversing relay unit
<b>RU-511</b>	Decurling relay unit
<b>RU-516</b>	Anti-Static relay unit
<b>RU-517</b>	Anti-Static relay unit
<b>SD-506</b>	Saddle stitch unit
<b>SD-510</b>	Saddle stitch unit for FS-532
<b>SD-513</b>	Saddle stitch unit
<b>TU-503</b>	Trimmer unit for SD-513
<b>WT-512</b>	Working table



© 2016 KONICA MINOLTA BUSINESS SOLUTIONS U.S.A., INC. All rights reserved. Reproduction in whole or in part without written permission is prohibited. KONICA MINOLTA, the KONICA MINOLTA logo, Count on Konica Minolta, bizhub, bizhub PRESS, PageScope, Simitri, and Giving Shape to Ideas are registered trademarks or trademarks of KONICA MINOLTA, INC. All other product and brand names are trademarks or registered trademarks of their respective companies or organizations. All features and functions described here may not be available on some products. Design & specifications are subject to change without notice.



KONICA MINOLTA

KONICA MINOLTA BUSINESS SOLUTIONS U.S.A., INC.  
100 Williams Drive, Ramsey, New Jersey 07446

[CountOnKonicaMinolta.com](http://CountOnKonicaMinolta.com)



Item #: C1100SS  
5/16 - S